

# CHINA'S ACCESS TO THE WTO AND THE TRADE POTENTIAL WITH BRAZIL

*São Paulo, December 04, 2001*

**Durval de Noronha Goyos Jr.**  
**Noronha-Advogados**

São Paulo, Rio de Janeiro, Brasilia, Curitiba, Salvador, Manaus, Porto Alegre  
Londres, Lisboa, Miami, Los Angeles, Buenos Aires, Shanghai



# SHANGHAI

450 Fushan Road  
Suntime International Mansion  
14<sup>th</sup> Floor, Suite F  
200122 Pudong, Shanghai, China  
**Telephone:** (86-21) 6876-6311  
**Facsimile:** (86-21) 6876-6312

**Internet e-mail:**

[noadsha@noronhaadvogados.com.br](mailto:noadsha@noronhaadvogados.com.br)

**Contact:**

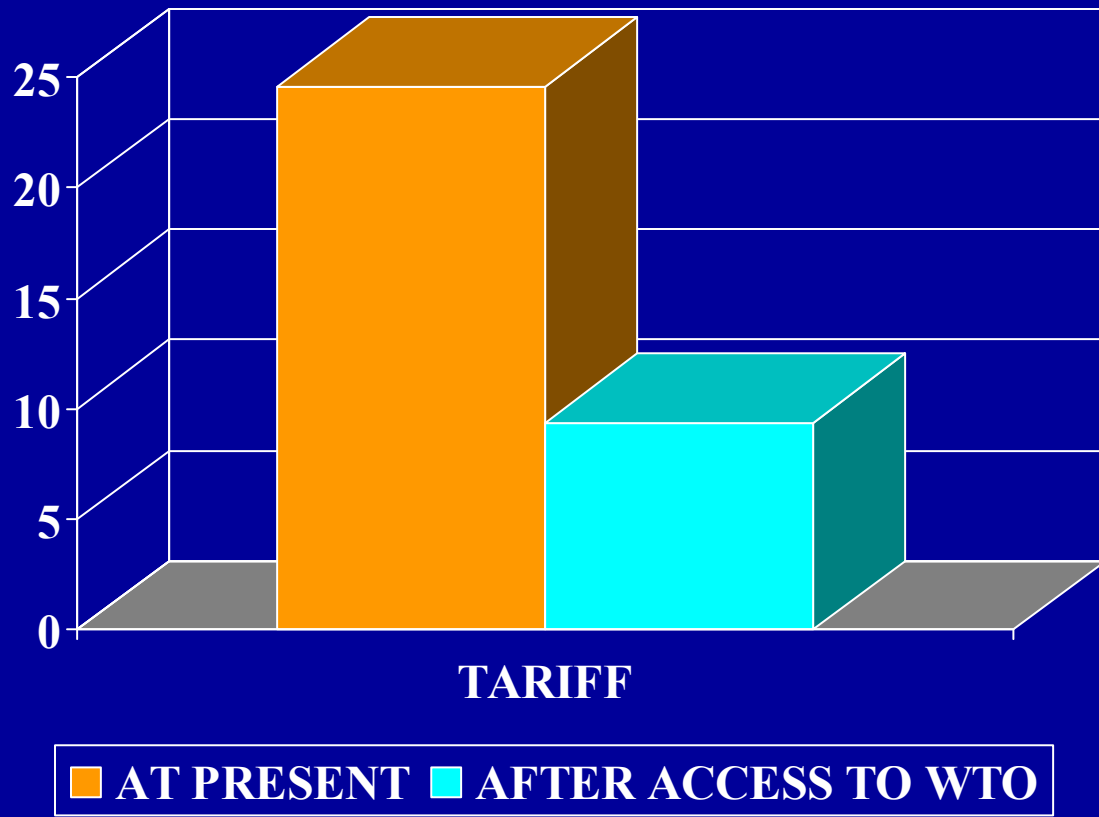
Cristina Luo Yijing



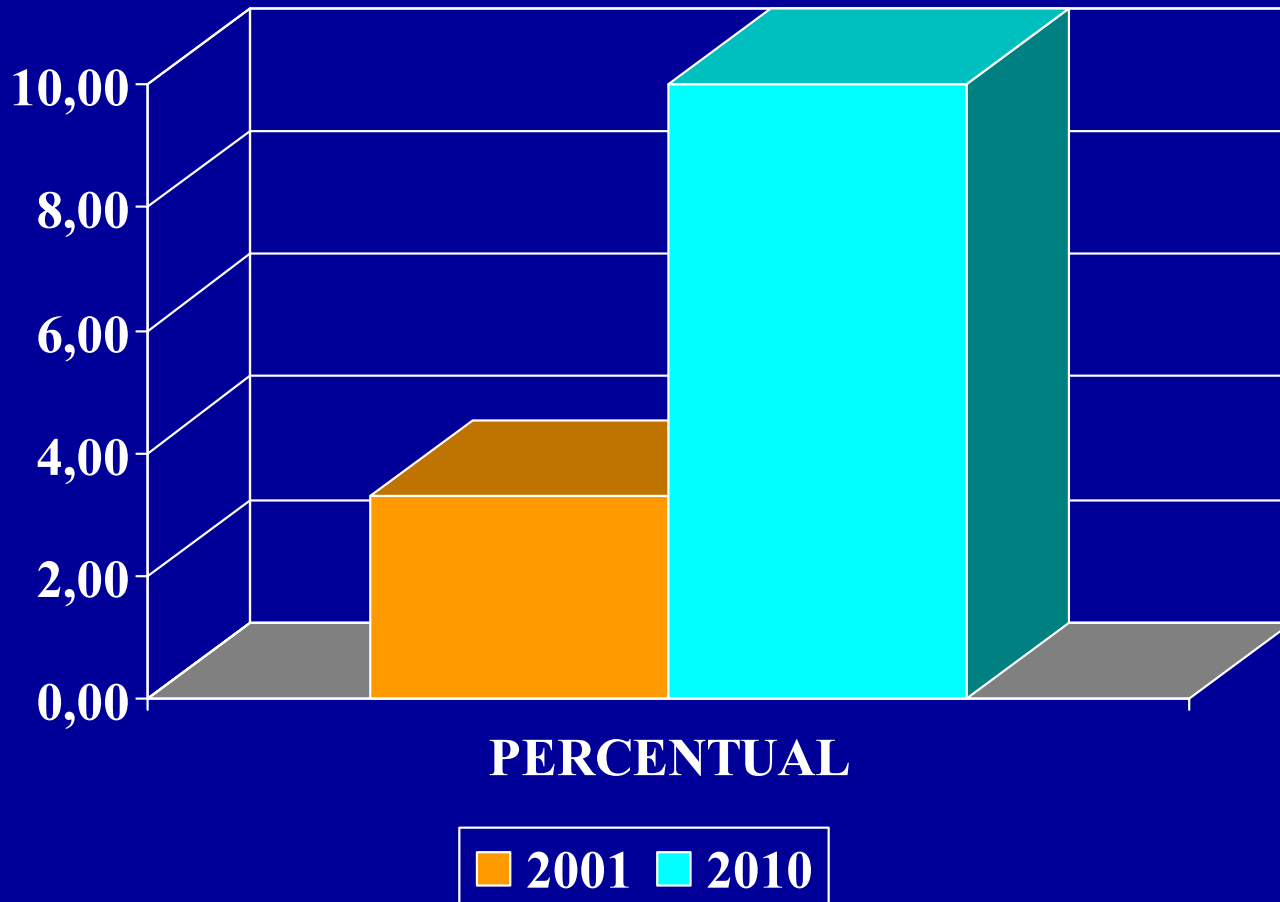
The Shanghai office opened in August 2000 and is the first Brazilian and Latin American office to be granted permission from the Chinese government to establish a commercial presence in China. This office will provide support in issues concerning Brazilian and international law.



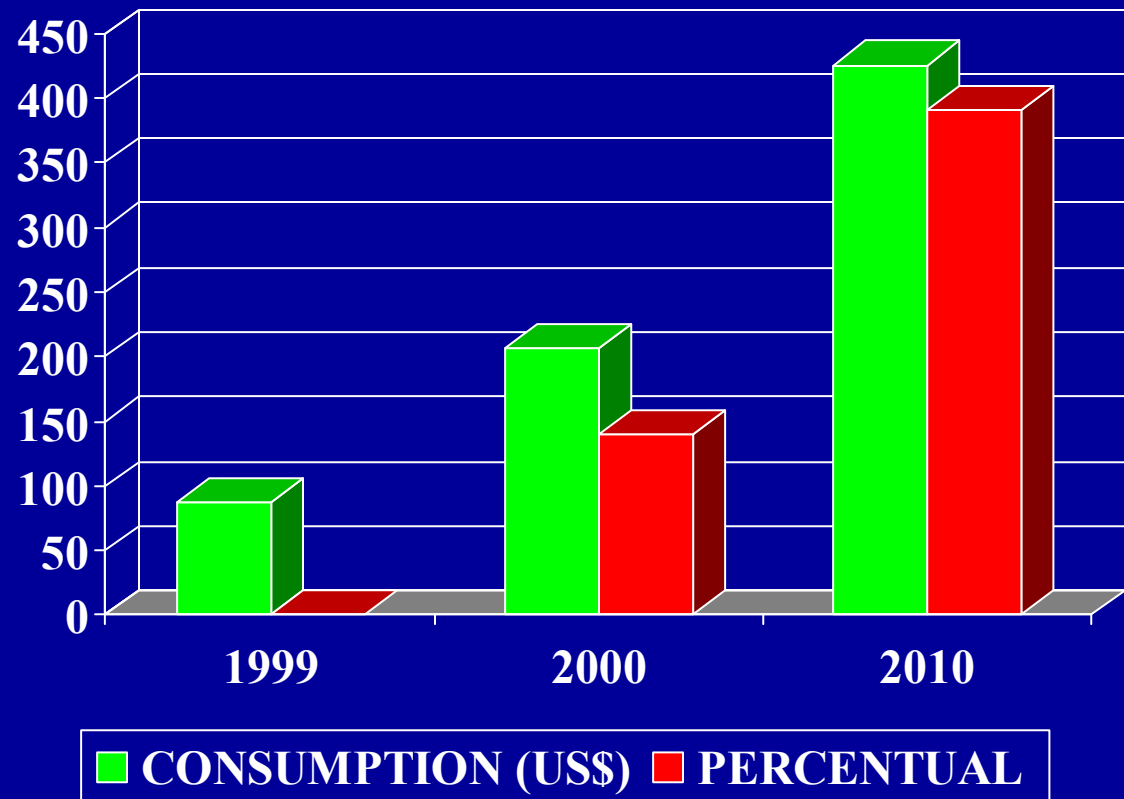
# TARIFF REDUCTION FOR INDUSTRIAL PRODUCTS



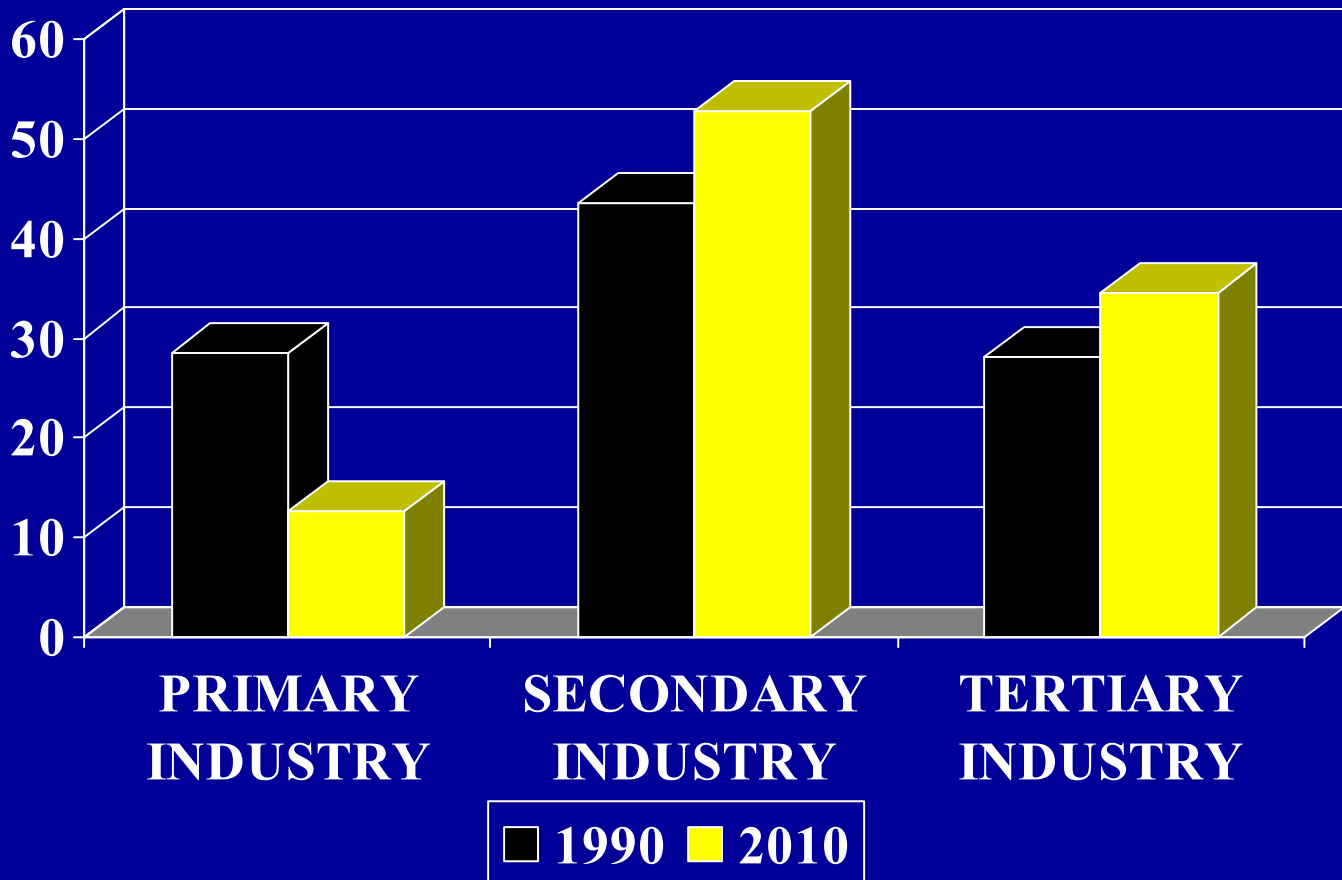
# CHINESE PARTICIPATION IN WORLD TRADE



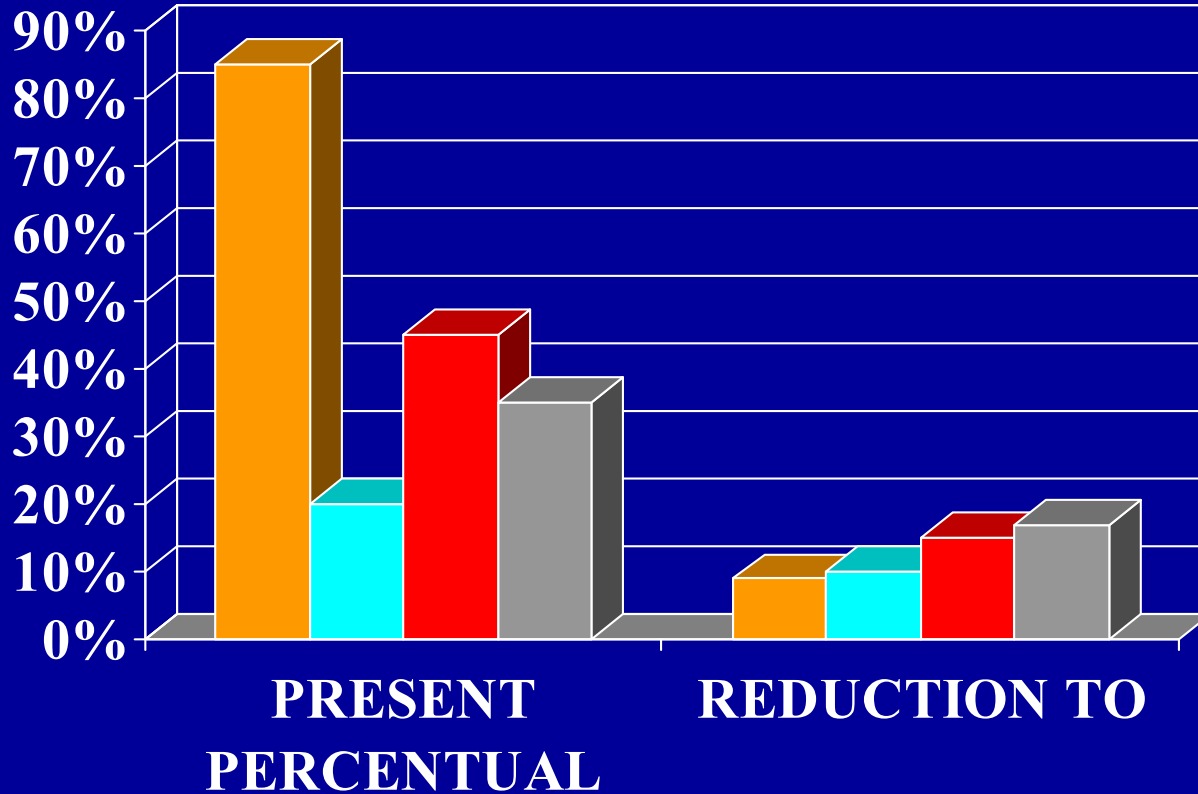
# EVOLUTION OF CHINESE INDIVIDUAL CONSUMPTION



# ANNUAL EVOLUTION OF CHINESE GNP



# CHINESE TARIFF REDUCTIONS IN AGRICULTURAL PRODUCTS



■ SOY ■ POULTRY ■ BEEF ■ ORANGE JUICE



## Pictures of Shanghai















